

YEAR

2022

LINK

CAUSEWAY RD (from SHELTER ST to HING FAT ST)

COVERAGE (B) STATION

2214

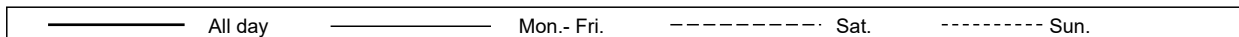
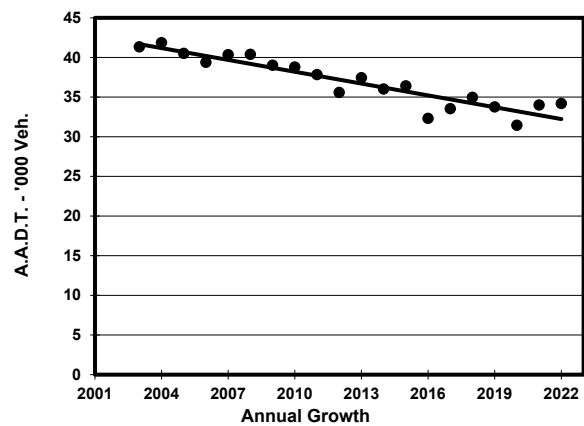
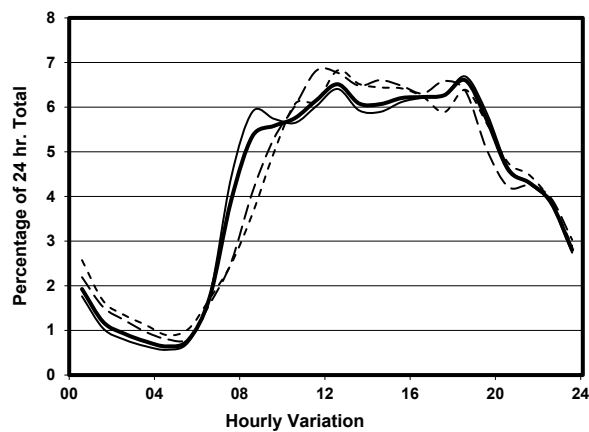
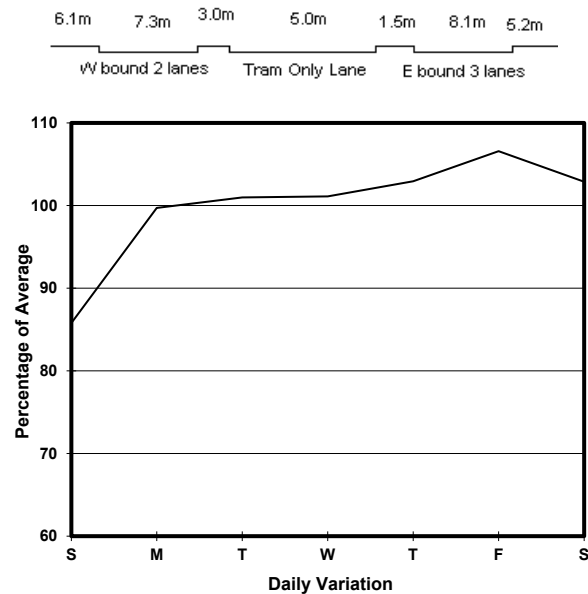
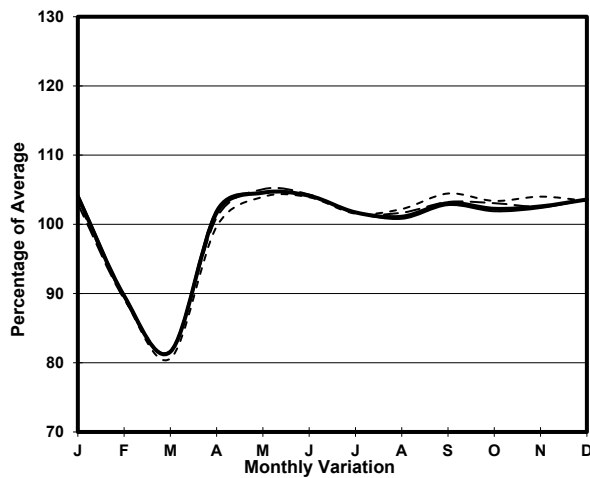
ROAD NETWORK

MAJOR

ROAD TYPE

PRIMARY DISTRIBUTOR

1. TRAFFIC FLOW VARIATION AND GROWTH



2. TRAFFIC CHARACTERISTICS (BY DIRECTION)

Parameter	All - Day	Mon. - Fri.	Sat.	Sun.
EAST BOUND				
A.A.D.T.	23350	23960	24010	20890
R 12 / 24 - %	68.2	68.9	66.7	66
R 16 / 24 - %	88.2	89	86.2	85.7
AM Peak Hour	0900-1000	0800-0900	0900-1000	0900-1000
One-way flow at AM peak hour	1200	1290	1190	950
T - % (AM)	-	16.8	-	-
PM Peak Hour	1800-1900	1800-1900	1700-1800	1600-1700
One-way flow at PM peak hour	1480	1540	1520	1330
T - % (PM)	-	18	-	-
Prop.of commercial vehicles - 16 hr.	-	16	-	-
WEST BOUND				
A.A.D.T.	10840	11240	11490	8770
R 12 / 24 - %	76.2	76.4	78	72.9
R 16 / 24 - %	91.4	91.8	91.3	89.3
AM Peak Hour	0900-1000	0800-0900	0900-1000	0900-1000
One-way flow at AM peak hour	710	790	690	530
T - % (AM)	-	19.9	-	-
PM Peak Hour	1800-1900	1800-1900	1700-1800	1800-1900
One-way flow at PM peak hour	770	820	810	620
T - % (PM)	-	20.8	-	-
Prop.of commercial vehicles - 16 hr.	-	19.7	-	-

3. OTHER INFORMATION AND COMMENT

4. Vehicle classification and occupancy - Monday to Friday

Time		Class of vehicle									
		Motor Cycle	Private Car	Taxi	Private LB	PLB	Goods veh.		Non Fr. Bus	Fr. Bus	
							Light	M & H		SD	DD
0700-0800	Pro	2.0	28.1	23.8	7.5	2.8	7.1	1.2	6.7	0.0	20.8
	Ocp	1.0	1.3	1.9	4.1	6.1	1.7	1.7	3.4	0.0	31.0
0800-0900	Pro	0.9	50.1	21.7	2.4	1.1	6.0	0.2	2.9	0.0	14.7
	Ocp	1.0	1.3	2.1	5.8	6.4	1.3	3.0	5.8	0.0	24.3
0900-1000	Pro	1.2	44.7	25.7	1.7	1.4	8.4	0.5	0.7	0.0	15.7
	Ocp	1.0	1.4	1.9	3.1	4.8	1.4	1.0	4.0	0.0	21.8
1000-1100	Pro	1.4	39.0	29.8	0.5	1.4	14.6	0.9	0.5	0.0	11.9
	Ocp	1.0	1.5	1.8	5.0	2.8	1.5	1.5	3.0	0.0	21.7
1100-1200	Pro	3.8	38.0	30.0	0.9	0.7	12.7	0.7	0.5	0.0	12.8
	Ocp	1.0	1.5	1.8	2.0	3.0	1.7	1.3	4.0	0.0	20.4
1200-1300	Pro	3.1	41.4	29.6	1.6	1.0	9.9	0.8	1.9	0.0	10.7
	Ocp	1.0	1.5	1.9	6.1	3.8	1.5	1.3	6.7	0.0	21.8
1300-1400	Pro	3.5	42.7	23.4	2.8	0.9	9.6	1.1	3.1	0.0	12.8
	Ocp	1.0	1.6	1.9	11.9	2.5	1.7	1.8	21.7	0.0	22.8
1400-1500	Pro	3.6	40.7	23.2	1.0	1.7	14.8	0.7	1.0	0.0	13.4
	Ocp	1.0	1.6	2.0	2.5	2.4	1.7	1.3	2.3	0.0	20.9
1500-1600	Pro	2.0	47.8	22.2	2.0	1.1	10.9	0.5	0.9	0.0	12.6
	Ocp	1.0	1.4	2.0	3.6	1.8	2.0	1.5	2.3	0.0	24.7
1600-1700	Pro	2.3	49.7	19.5	0.7	1.2	8.9	0.5	2.1	0.0	15.1
	Ocp	1.0	1.5	1.9	1.7	5.6	1.8	1.5	9.1	0.0	23.9
1700-1800	Pro	3.5	46.0	18.8	1.5	1.0	8.8	1.0	0.5	0.0	19.0
	Ocp	1.0	1.5	1.8	2.3	7.5	1.5	1.5	3.0	0.0	30.4
1800-1900 Peak hour	Pro	3.9	49.0	22.2	0.7	1.7	3.7	0.0	0.5	0.0	18.4
	Ocp	1.1	1.4	1.9	1.0	4.3	1.3	0.0	1.5	0.0	38.2
1900-2000	Pro	6.5	49.9	23.6	0.2	0.5	3.1	0.2	0.0	0.0	15.9
	Ocp	1.0	1.5	2.0	2.0	6.5	1.2	1.0	0.0	0.0	31.2
2000-2100	Pro	8.4	38.1	28.7	0.0	1.9	4.1	0.3	0.0	0.0	18.6
	Ocp	1.0	1.5	1.8	0.0	4.7	1.5	2.0	0.0	0.0	23.1
2100-2200	Pro	4.5	43.1	25.7	0.0	2.8	2.8	0.3	0.0	0.0	20.8
	Ocp	1.1	1.7	2.4	0.0	6.1	2.1	1.0	0.0	0.0	24.1
2200-2300	Pro	4.8	38.9	31.0	0.0	1.7	5.2	0.0	0.0	0.0	18.5
	Ocp	1.0	1.8	2.3	0.0	2.8	1.5	0.0	0.0	0.0	24.3
16 hours	Pro	3.4	43.5	24.8	1.4	1.3	8.4	0.6	1.3	0.0	15.3
	Ocp	1.0	1.5	2.0	5.0	4.4	1.6	1.5	7.8	0.0	25.7

Legend: Pro. Proportion of vehicles in % (Sum may not add up to 100% due to figure rounding)*

Ocp. Average occupancy of vehicles including both driver and passengers*

M&H Medium and Heavy

* All traffic data are collected from combined bounds